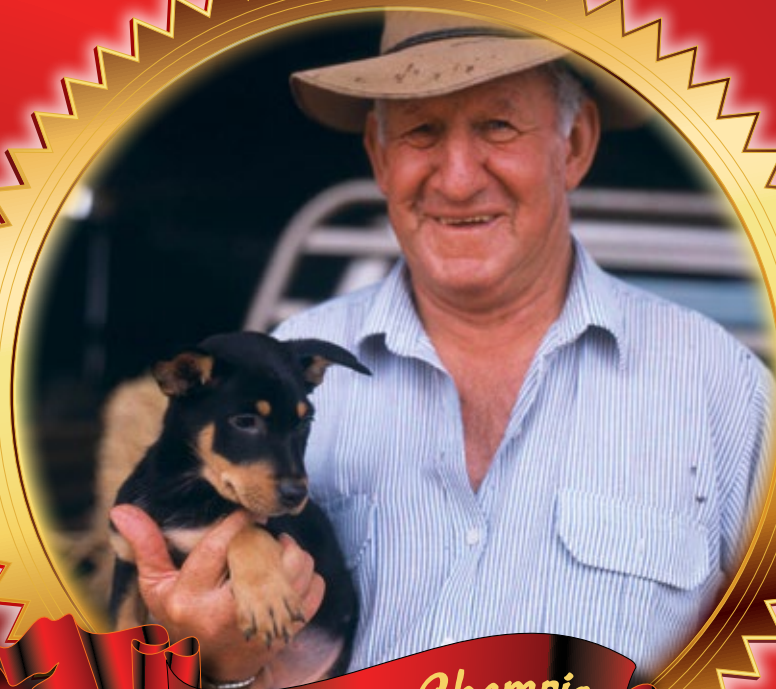


Neville Male's Innovative Environmental Solution



Catchment Champion

Jonathon Male, Casey Scott, Taylor Clark, Charlee
Kleine, Jake Fifield and Rebecca Brennan

Henty Public School



Creative Catchment Kids

Creative Catchment Kids is an initiative of the Murray Darling Association and Wirraminna Environmental Education Centre. It aims to improve engagement between the Murray Catchment Management Authority and school students by providing opportunities for positive and authentic ventures that encourage students to develop creative solutions to natural resource management issues. www.murray.cma.nsw.gov.au/creative-catchment-kids.html

Wirraminna Environmental Education Centre

The Wirraminna Environmental Education Centre is located in Burrumbuttock, north of Albury in southern NSW. Since 1995, the centre, which is adjacent to Burrumbuttock Public School, has provided opportunities for discovery and learning about the natural environment, the ecology of the local woodlands and the beauty of native plants. www.wirraminna.org

Murray Darling Association

The Murray Darling Association has membership of over 100 Local Government councils in the Murray-Darling Basin, as well as community groups, businesses and individuals with an interest in ensuring that the Basin continues as a valuable asset for all Australians. Since 1950, the Association has initiated various school and community education programs on managing the Basin's land and water resources. www.mda.asn.au



Enviro-Stories is an innovative literacy education program that inspires learning about natural resource and catchment management issues. Developed by PeeKdesigns, this program provides students with an opportunity to publish their own stories that have been written for other kids to support learning about their local area. www.envirostories.com.au

Neville Male's Innovative Environmental Solution

Authors: Jonathon Male, Casey Scott, Taylor Clark, Charlee Kleine,
Jake Fifield and Rebecca Brennan

Teacher: Theresa Kane

School: Henty Public School

Catchment Champions

In 2013, students involved in the Creative Catchment Kids program researched and wrote stories about 'Catchment Champions', people who have made important contributions to managing natural resources in their local community. The program was generously funded by the Murray and Murrumbidgee catchment management authorities.

The Catchment Champions books are part of the Enviro-Stories Education Program.



**Catchment Management
Authority**
Murray



**CARING
FOR
OUR
COUNTRY**



**Catchment Management
Authority**
Murrumbidgee

Design by PeekKdesigns, www.peekdesigns.com.au

Copyright 2013 Murray Darling Association, www.mda.asn.au



Members of the Wattle Creek Landcare Group pouring concrete using a concrete pump at Eric Kreutzberger's second flume at 'Kilbrae' - March 1992 (Site 3).

This story tells the tale of the Wattle Creek Landcare group that built six long lasting and efficient flumes through thirteen farms. The flumes were built to prevent the township of Yerong Creek from flooding and conserve the soil for future farm production. This book acknowledges the hard work put into the project.

Neville Arthur Male

Neville Arthur Male was born in Barellan, NSW on the 13th of August 1935. Neville was the eldest of three boys. He moved to Henty and got married to Helen Ferguson. They had five children and their names were Greg, Amanda, Cameron, Simon and James. Neville attended school at Barellan and Albury Grammar.





Wattle Creek was being badly damaged as the result of heavy rains and flooding.

The Need for Change

Yerong Creek had been affected by flooding for many years. Neville searched for an idea to prevent this problem occurring. After lots of planning and research they, with the assistance from Andrew Blake C.A.L.M. - Henty, came up with the idea to construct several flumes running through thirteen farms in the Yerong Creek district. Neville worked closely with the Wattle Creek Landcare Group as their President.



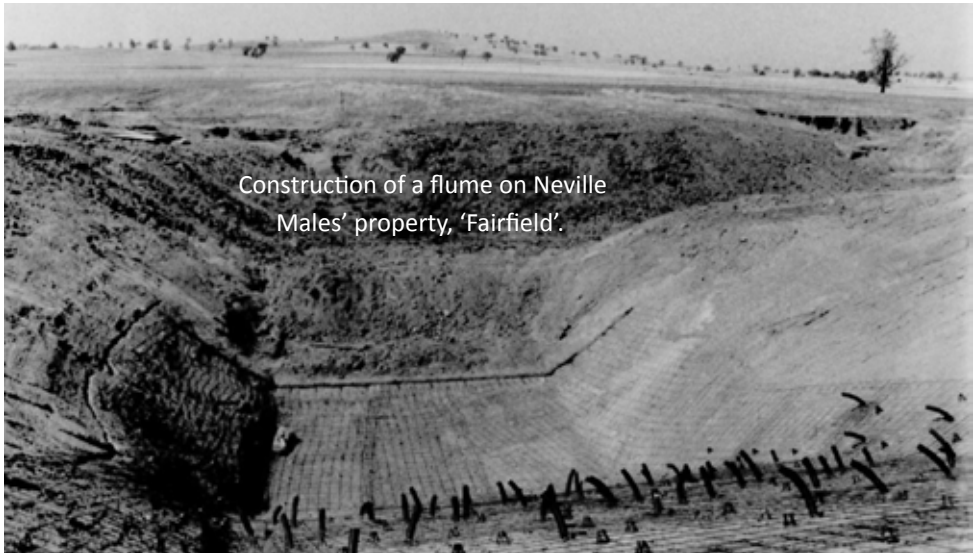
Water lays in paddocks following heavy rains. The course of Wattle Creek was slowly changing and productive land was slowly reducing.



A Solution is Found

Neville planned for months trying to find a way to reduce flooding and erosion. In 1990, after months of planning and meetings with council, the construction of the first flume began. It was an exciting breakthrough for Neville and the Wattle Creek Landcare Group.

Members of the Wattle Creek Landcare group constructing one of the flumes.



Construction of a flume on Neville
Males' property, 'Fairfield'.

What are Flumes?

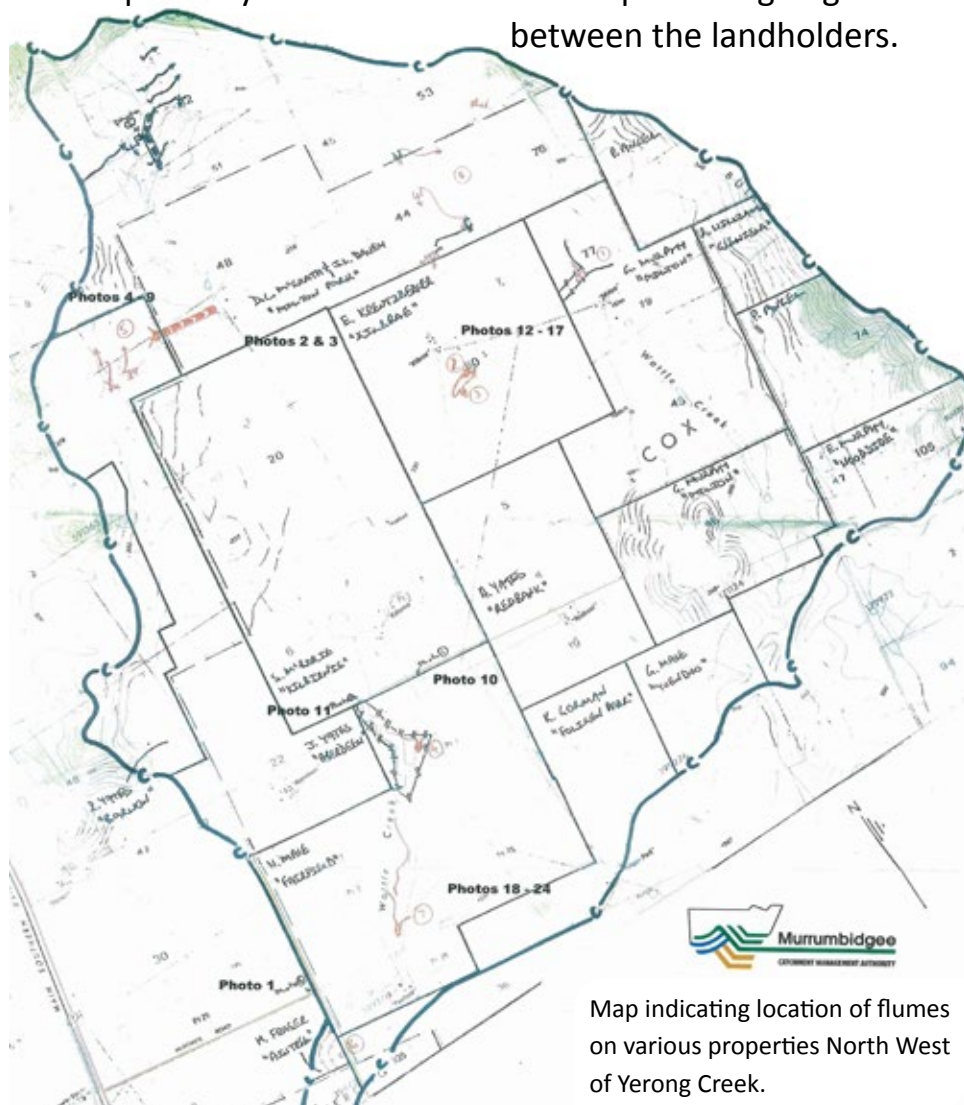
Flumes are concrete spillways that slow down and bring together the flow of water. The flumes in the Wattle Creek Landcare Project were planned to keep wattle creek on a proper course and dramatically reduce erosion.



Concrete is poured using a
masonry pump.

Success Continues

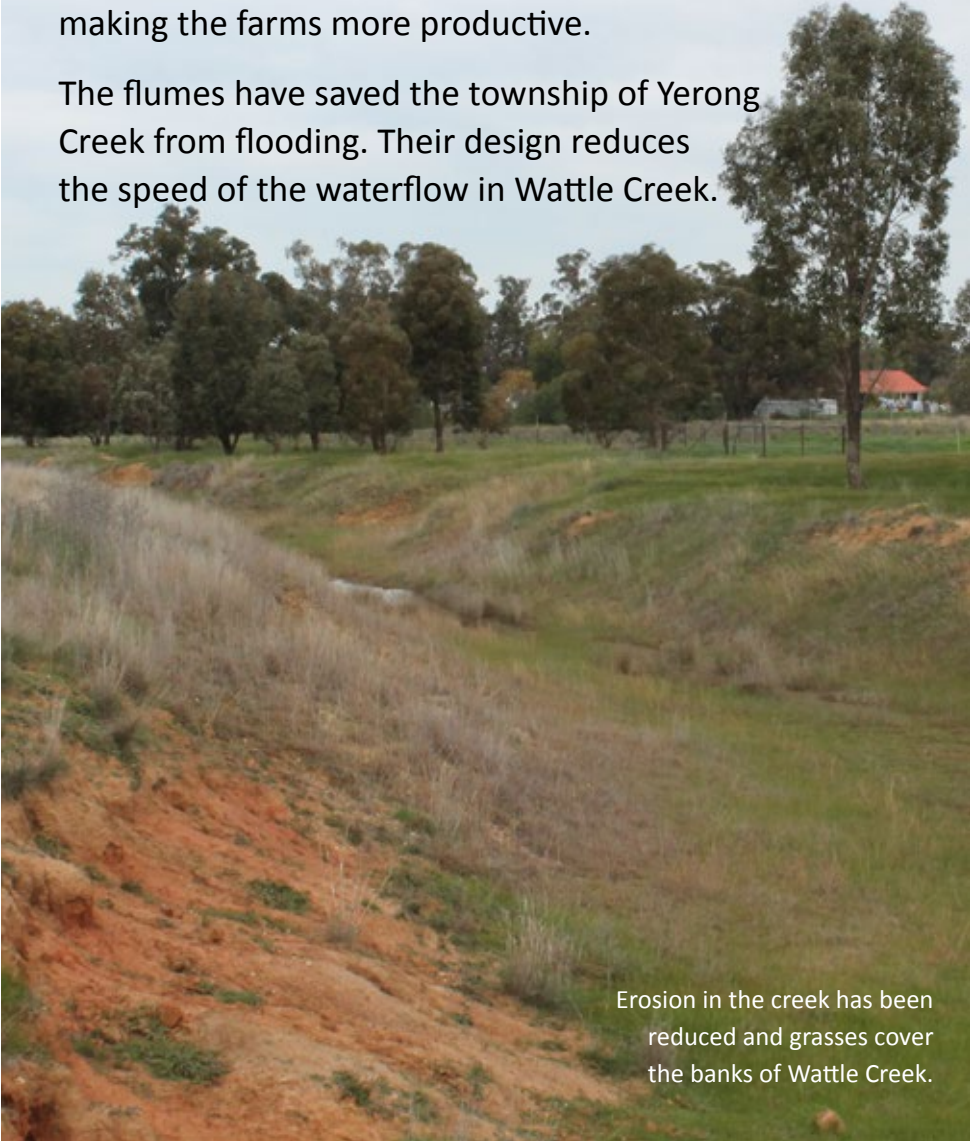
The second and third flumes were soon built following the success of the first. The next two flumes were built in 1991-1992 and the total cost was \$20, 153. In all six flumes were built. Neville said the plans worked exceptionally well because of the cooperation going on between the landholders.



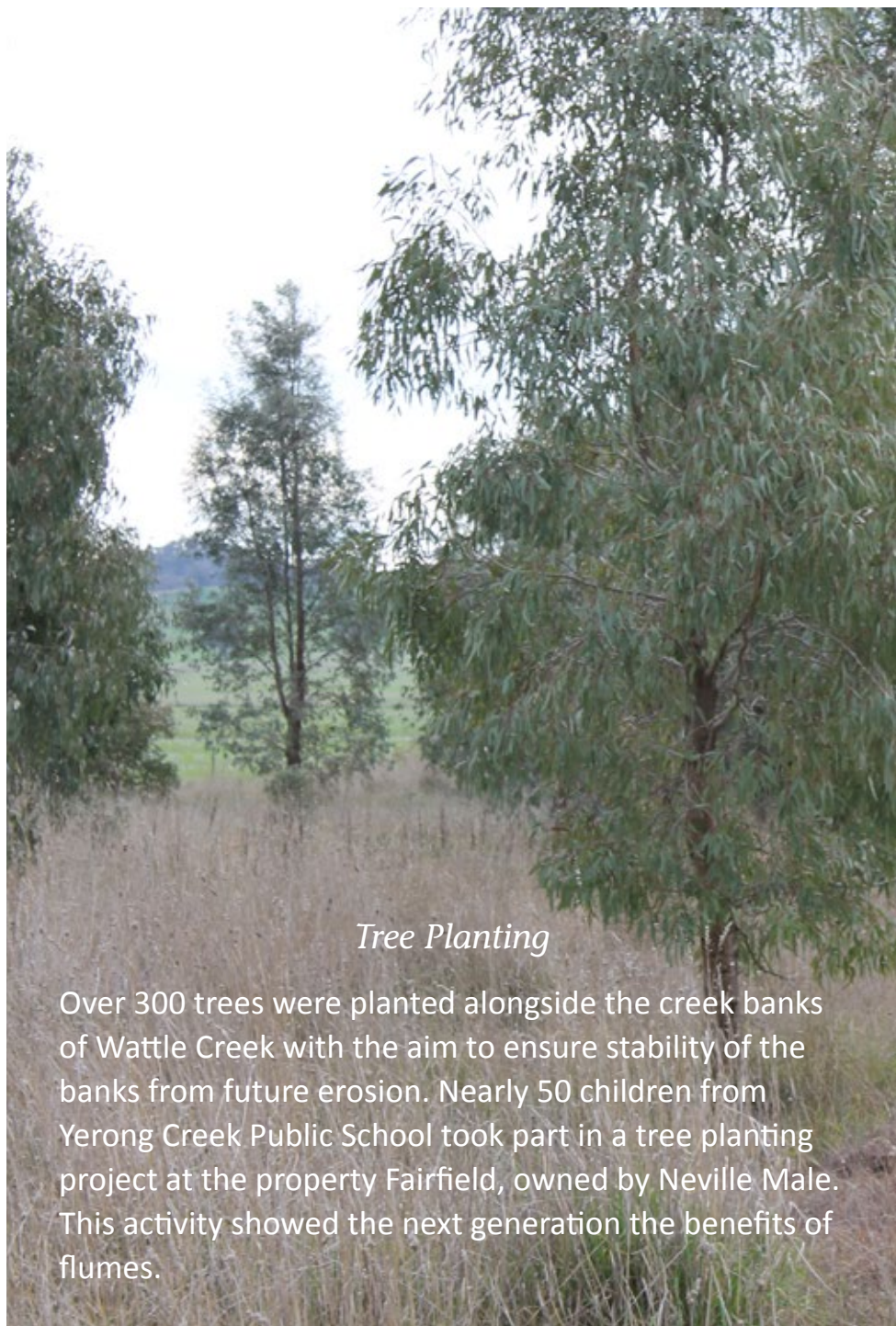
Sustainability in the Environment

Neville's idea has solved many environmental problems such as the washing away of topsoil and erosion. If the flumes weren't constructed farmers would see their topsoil slowly disappearing. The flumes have assisted in making the farms more productive.

The flumes have saved the township of Yerong Creek from flooding. Their design reduces the speed of the waterflow in Wattle Creek.

A photograph of a creek with grassy banks and trees in the background. The creek is a small, shallow channel of water flowing through a grassy field. The banks are covered in green grass and some dry, yellowish grass. In the background, there are several large, leafy trees and a small building with a red roof. The sky is overcast.

Erosion in the creek has been reduced and grasses cover the banks of Wattle Creek.



Tree Planting

Over 300 trees were planted alongside the creek banks of Wattle Creek with the aim to ensure stability of the banks from future erosion. Nearly 50 children from Yerong Creek Public School took part in a tree planting project at the property Fairfield, owned by Neville Male. This activity showed the next generation the benefits of flumes.

The Support that Made it Possible

The Wattle Creek Landcare Group were grateful for the support that was provided by Conservation and Land Management staff.

“Merabou”
Henty.
W.S.W.
May 1994

Tony Watson
C.P.L.M.
Henty.

Dear Tony,

Now that the final report of the Wattle Creek Land Care Group three year project has been finalised, we as a group would like to thank the Conservation and Land Management staff for their time and enthusiasm given to the project.

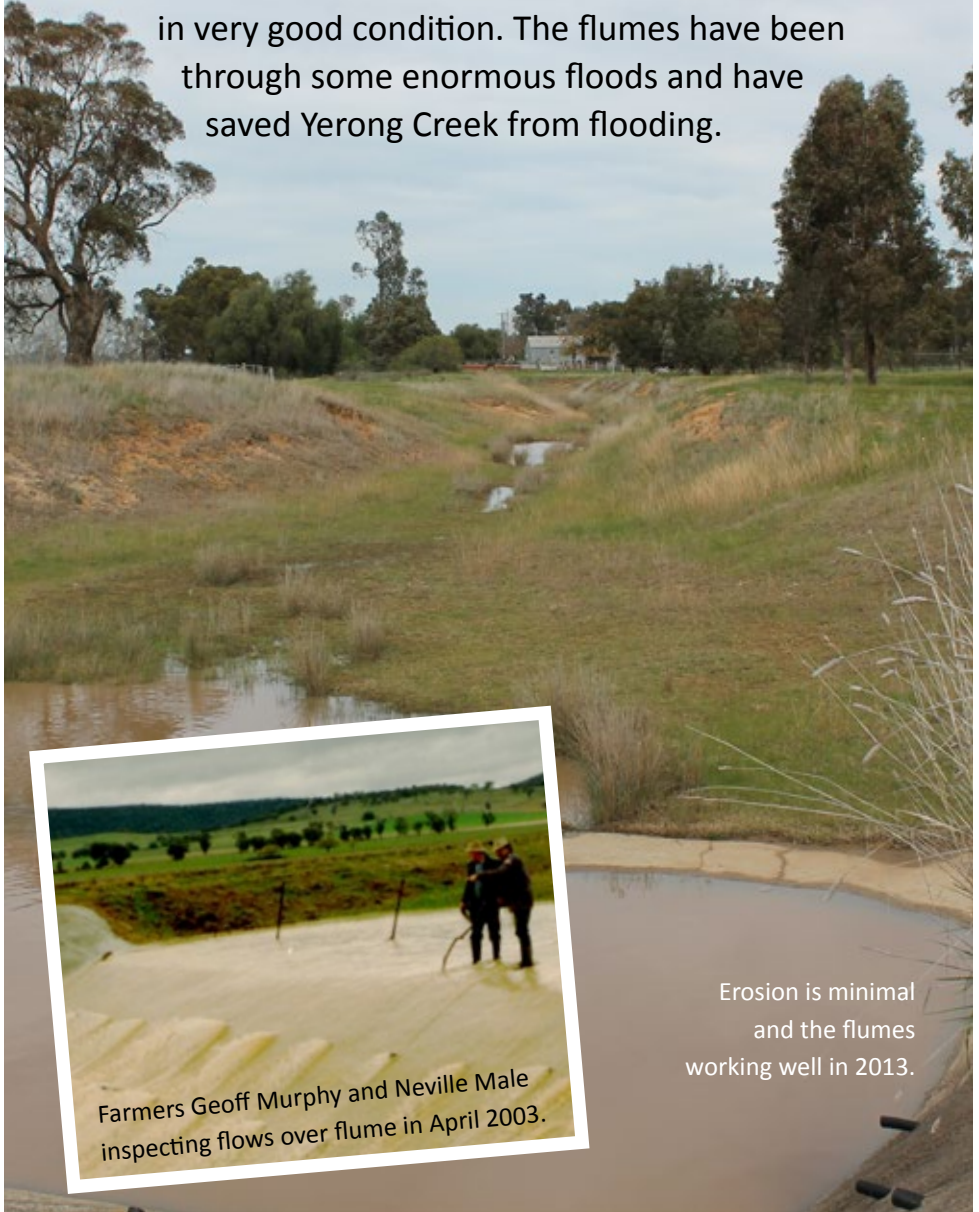
The group and myself personally would like to thank Bert Stevens for his expertise in the construction of the glimmer as it was all so new to our group - also his years of experience and skills as a Bull Dozer operator were particularly appreciated.

Yours faithfully,
Neville Male.

Letter from Neville Male to the Department of Conservation and Land Management, 1994, thanking staff and the Department for their support.

Present

It is predicted that the flumes will last for at least 50 years. They have been running for 25 years and are in very good condition. The flumes have been through some enormous floods and have saved Yerong Creek from flooding.



Thank You

We thank Neville Male and his family for the support we were given as we learnt the history related to the innovative plan and construction of flumes along Wattle Creek. The flumes have helped the farmers and the township of Yerong Creek. The flumes are a sustainable project that have made a big difference to the environment. We also thank Neville for letting us share this exciting story.



The Creative Catchment Kids from Henty Public School enjoyed listening to Neville's stories about a very innovative environmental solution. Neville and the Wattle Creek Landgroup are true Catchment Champions.



Jonathon Male, Casey Scott, Taylor Clark, Charlee Kleine,
Jake Fifield and Rebecca Brennan

2013 Year 6, Henty Public School

The 2012 and 2013 Creative
Catchment Kids writing
program was showcased
at the Seventh World
Environmental Education
Congress, held in Morocco
during June 2013.



**Catchment Management
Authority**
Murray



CARING
FOR
OUR
COUNTRY



**Catchment Management
Authority**
Murrumbidgee