

Animals of the Gippsland Lakes

Middle School
East Gippsland Specialist School



Love Our Lakes

Gippsland Lakes Ministerial Advisory Committee

The Gippsland Lakes are precious; we need to protect them and pass them on to future generations. 'Love our Lakes' is about a shared responsibility to participate in caring for the Lakes and catchment. The Gippsland Lakes Ministerial Advisory Committee has an important role in assisting the Victorian Government and the community to Love Our Lakes. www.loveourlakes.net.au

Victorian Association of Environmental Education

The Victorian Association for Environmental Education (VAEE) is an independent professional association whose purpose has energised educators from all sectors to contribute their time and expertise to ensuring that environmental education and education for sustainability continue to be valued. www.vaee.vic.edu.au

James Yeates Printing

James Yeates Printing are a family company and produce commercial printing from simple flyers, business stationery and cards, to books and full color promotional brochures. James Yeates Printing have kindly supported this Enviro-Stories program. www.jamesyeatesprinting.com.au



Enviro-Stories is an innovative literacy education program that inspires learning about natural resource and catchment management issues. Developed by PeeKdesigns, this program provides students with an opportunity to publish their own stories that have been written for other kids to support learning about their local area. www.envirostories.com.au

Animals of the Gippsland Lakes

Authors: Middle School

Coordinating Teacher: Elizabeth Prosser

School: East Gippsland Specialist School



© Gippsland Lakes Ministerial Advisory Committee 2014,
www.gippslandlakes.net.au

Design by PeekKdesigns, www.peakdesigns.com.au

Printed by James Yeates Printing, www.jamesyeatesprinting.com.au

We are the students from East Gippsland Specialist School.

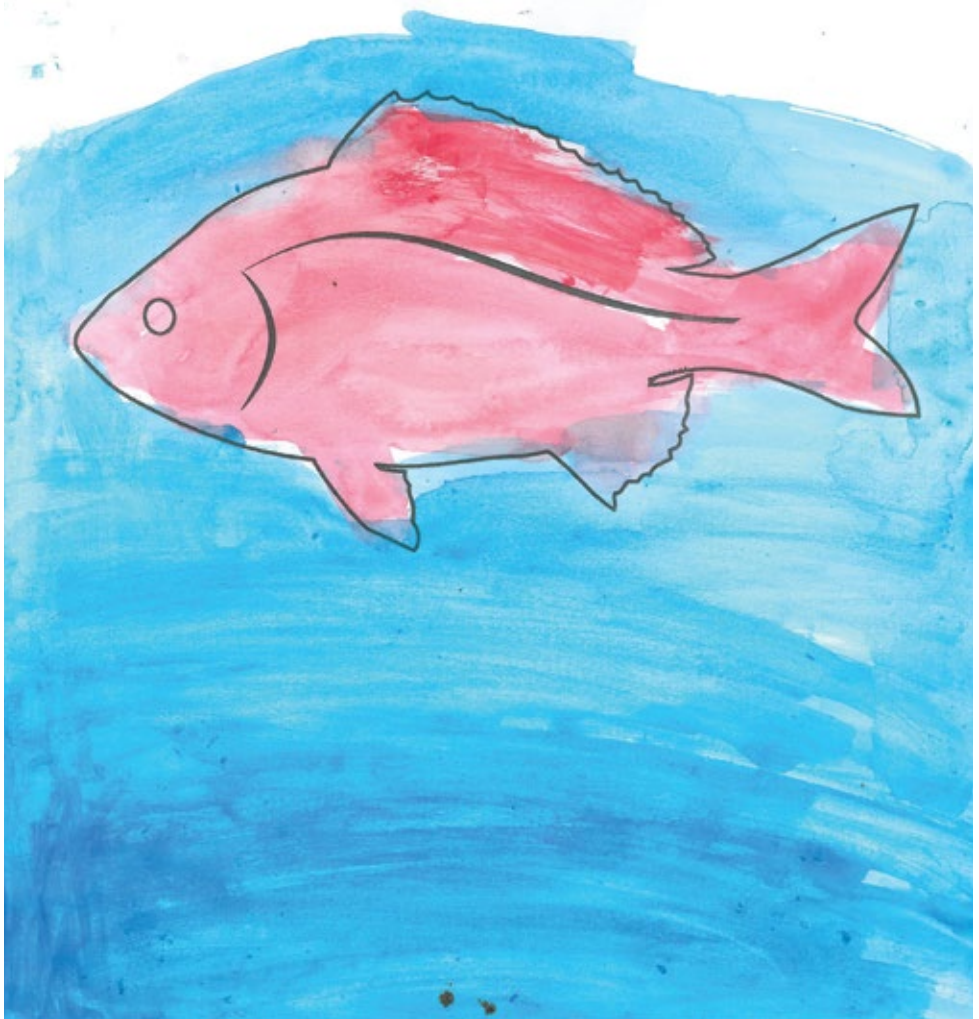
We love all of the different animals that you can find in and around the Gippsland Lakes.



Bream live in the Gippsland Lakes.

Bream are a type of fish.

They live in rivers, lakes and oceans and eat algae, waterbugs, crustaceans and small fish.



Seahorses live in the Gippsland Lakes.

Seahorses are a type of fish.

They live in salt water lakes and oceans and eat plankton, small fish and small crustaceans like shrimp.



Koalas live around the Gippsland Lakes. You can find lots of them on Raymond Island.

Koalas are a type of mammal and belong to the marsupial family.

They live in gum trees and eat gum leaves.



Flying foxes roost around the Gippsland Lakes.

Flying foxes are a type of bat and are mammals.

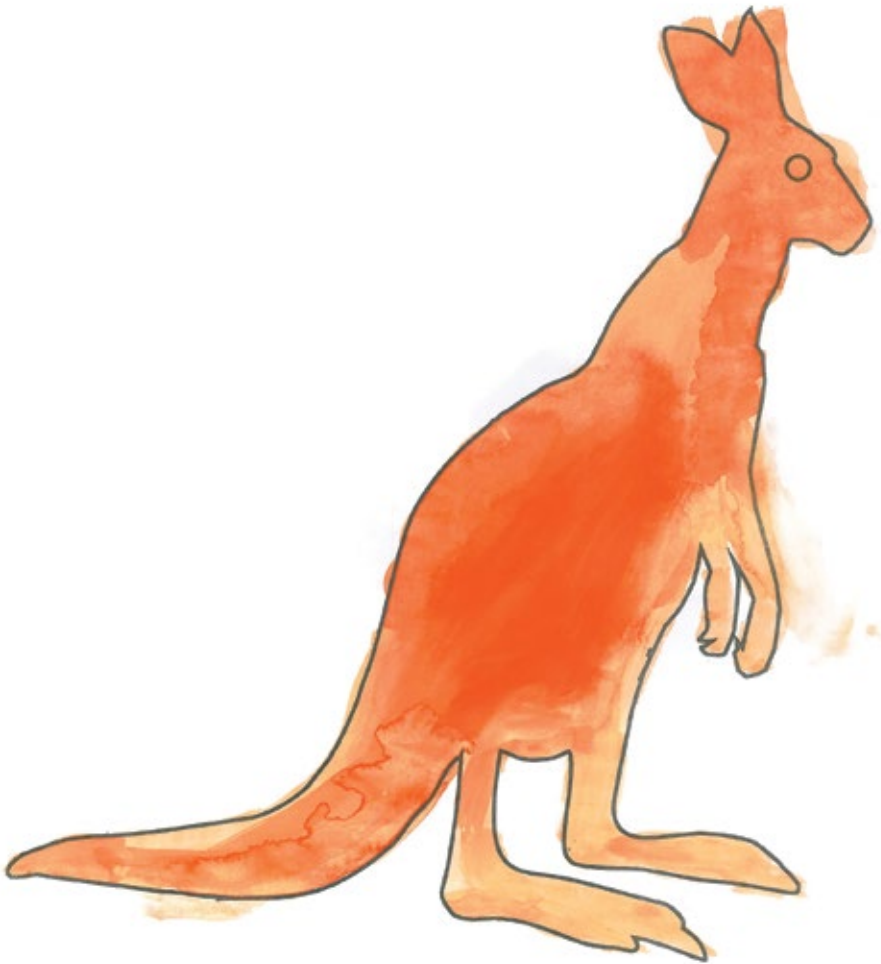
They live in trees and eat nectar, pollen and fruit. They are important for our forests.



Kangaroos live around the Gippsland Lakes.

Kangaroos are a type of mammal and belong to the marsupial family.

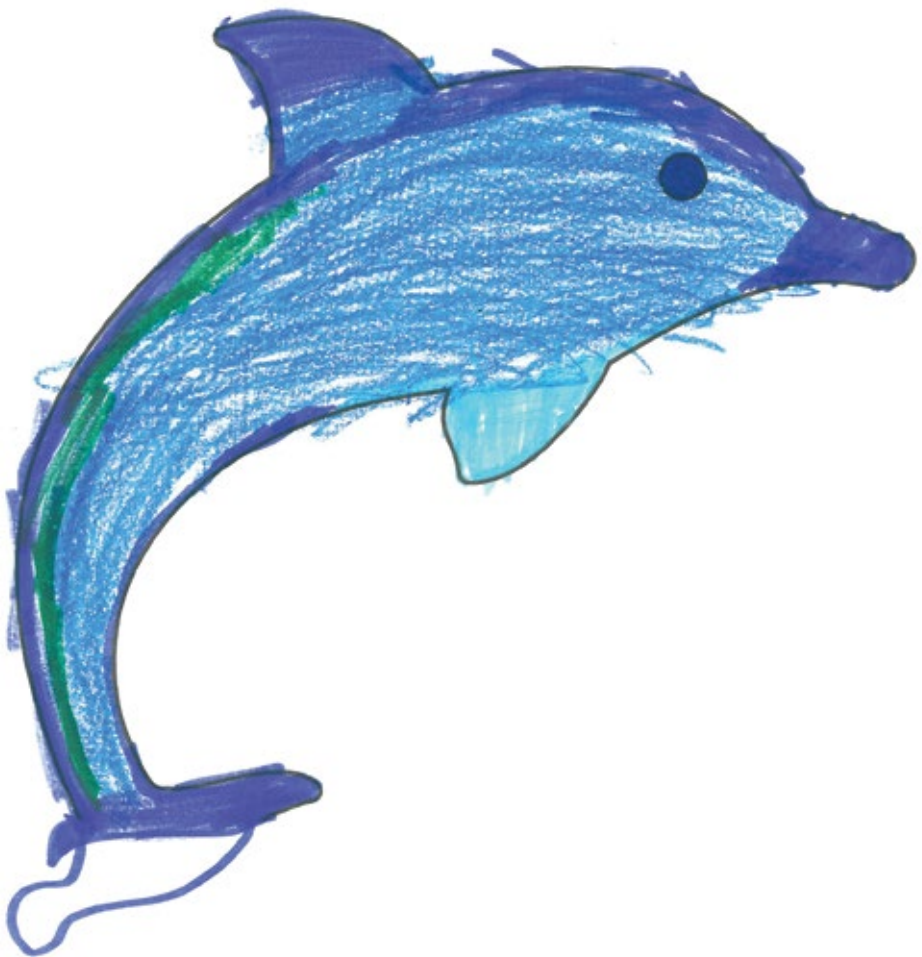
They live in bushland and eat grass.



Dolphins live in the Gippsland Lakes. The Burrunan dolphin is the only dolphin found in the Gippsland Lakes.

Dolphins are a type of mammal.

They live in lakes and oceans and eat fish and squid.



Platypus live in the Gippsland Lakes region.

Platypus are a type of mammal and belong to the monotreme family.

They live in freshwater rivers, nest in burrows and eat worms and snails.



Echidnas live around the Gippsland Lakes area.

Echidnas are a type of mammal and belong to the monotreme family.

They live in burrows in bushland and eat ants and termites.



Pelicans live in the Gippsland Lakes area.

Pelicans are a type of bird.

They live near rivers, swamps, lakes or coastal areas and eat fish.



Black swans live in the Gippsland Lakes area.

Black swans are a type of bird.

They live in lakes and rivers and eat snails, waterbugs and seagrass.



Kookaburras live in the Gippsland Lakes area.

Kookaburras are a type of bird.

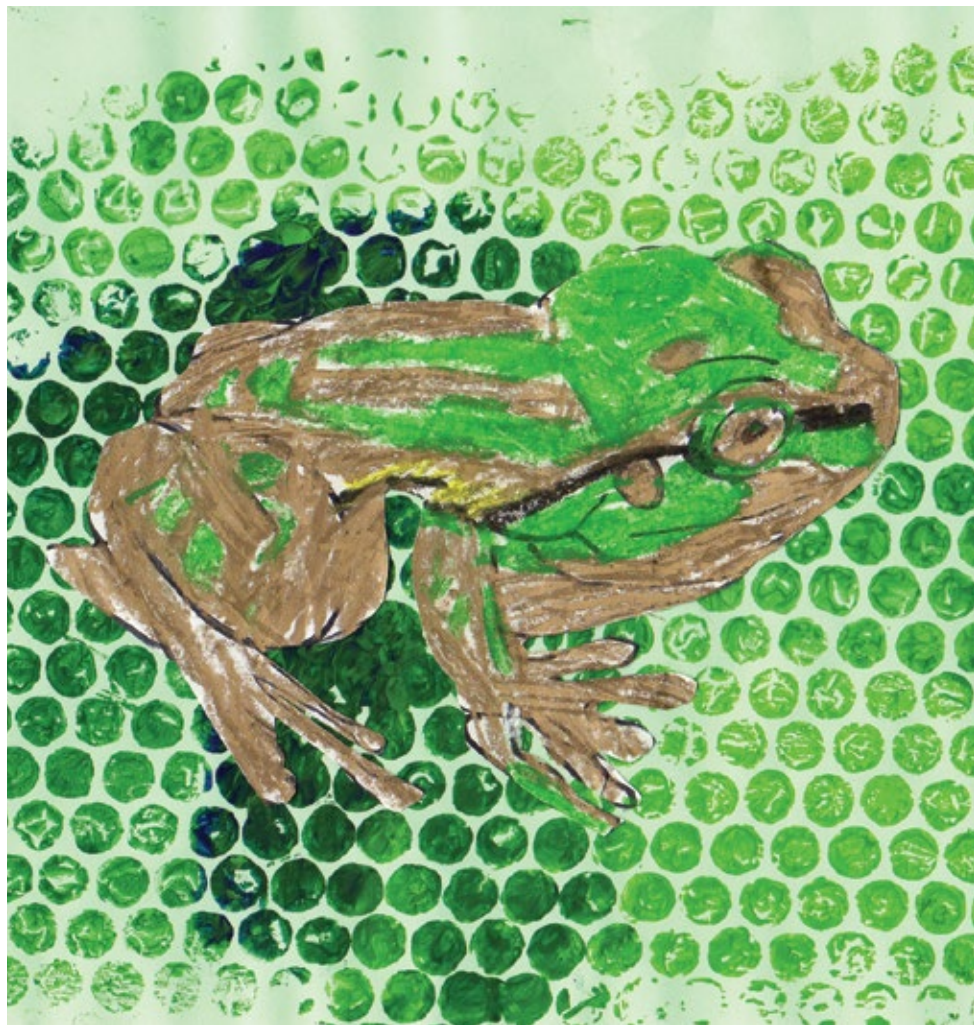
They live in trees and eat frogs, small snakes and lizards.



Frogs live in and around the Gippsland Lakes.

A frog is a type of amphibian.

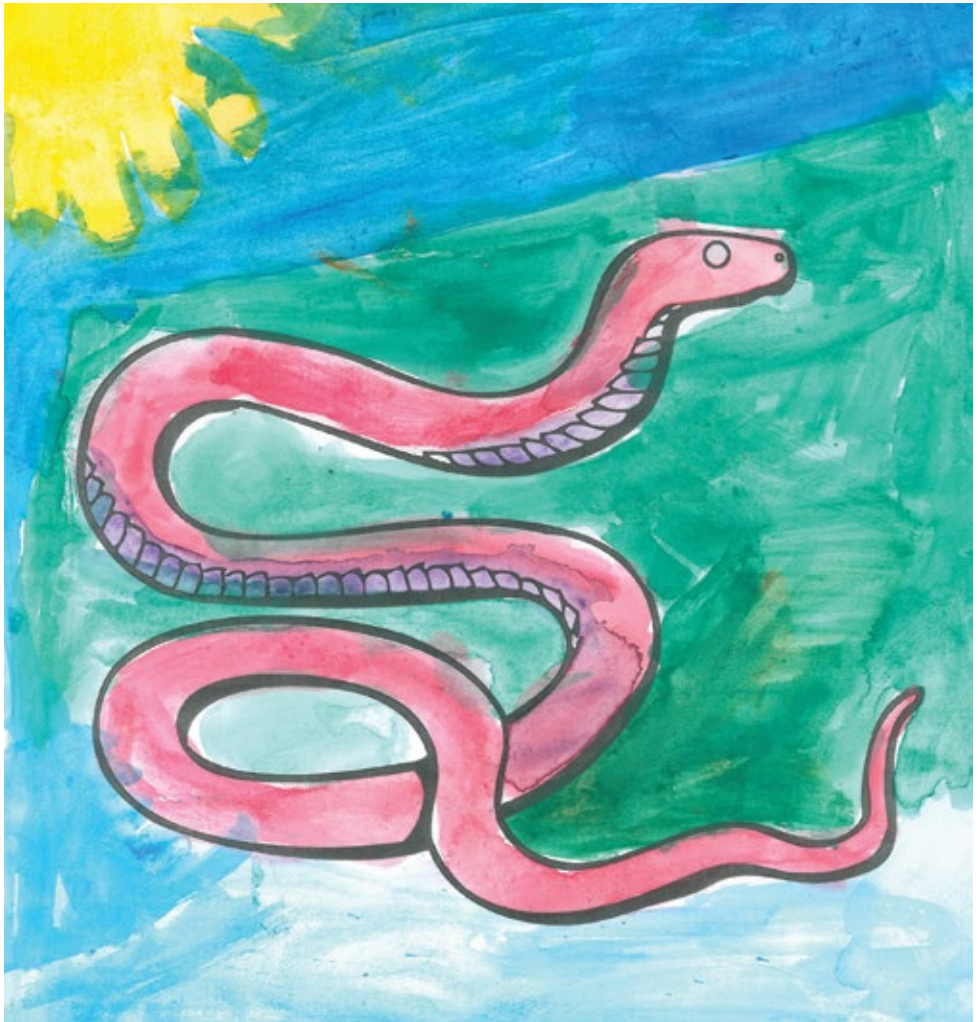
They live in wetlands, swamps, bushland and forests. They eat insects.



Red-bellied black snakes live around the Gippsland Lakes.

Red-bellied black snakes are a type of reptile.

They live in bushland and eat frogs, mice, rats and other small animals.





The Gippsland Lakes is a beautiful place because of all the wonderful animals that live there.



2014 Middle School
East Gippsland Specialist School

Love Our Lakes

www.loveourlakes.net.au

