

Aboriginal Animal Tracks



Grace Scadding
Borenore Public School





Enviro-Stories is an innovative literacy education program that inspires learning about natural resource and catchment management issues. Developed by PeeKdesigns, this program provides students with an opportunity to publish their own stories that have been written for other kids to support learning about their local area.

www.envirostories.com.au

In 2014, the “Tools, Totems & Tucker” Enviro-Stories program provided local kids with the opportunity to write and illustrate stories about local Aboriginal cultural - in particular Wiradjuri culture. This program was sponsored by the Central West and Central Tablelands Local Land Services.

Central Tablelands Local Land Services

The Central Tablelands Local Land Services region is located in central New South Wales and covers an area of approximately 31,365 km². It includes the major towns of Bathurst, Blayney, Cowra, Lithgow, Molong, Mudgee, Oberon and Orange. It falls predominantly within Wiradjuri Aboriginal country and small parts of Dharug and Darkinjung country.

www.lls.nsw.gov.au/centraltablelands

Central West Local Land Services

The Central West Local Land Services region is home to around 110,000 people and covers the central west slopes region around Grenfell, Forbes and Wellington to the western plains of Nyngan and Coonamble. The major Aboriginal nations that the central west region overlies are the Wiradjuri, Wailwan, Wongaibon, Kawambarai and Kamialroi. These nations also extend into other Local Land Services regions.

www.lls.nsw.gov.au/centralwest

Aboriginal Animal Tracks

Author: Grace Scadding

Teacher: Carol Smithers

School: Borenore Public School

The “Tools, Totems and Tucker” Enviro-Stories Program has been proudly supported by the Central West and Central Tablelands Local Land Services.

The “Tools, Totems & Tucker” collection consists of the following books:

Sponsored by Central Tablelands Local Land Services

- Aboriginal Totems
- Our Living Land
- Aboriginal Animal Tracks
- Aboriginal Life
- The Dreamtime Trilogy

Sponsored by Central West Local Land Services

- Burnum finds his way
- How the Koala got his claws
- Storm Boy and Uncle Farren
- The Peculiar Platypus
- The Rainbow Serpent is back!

ISBN: 978 1 74256 698 6

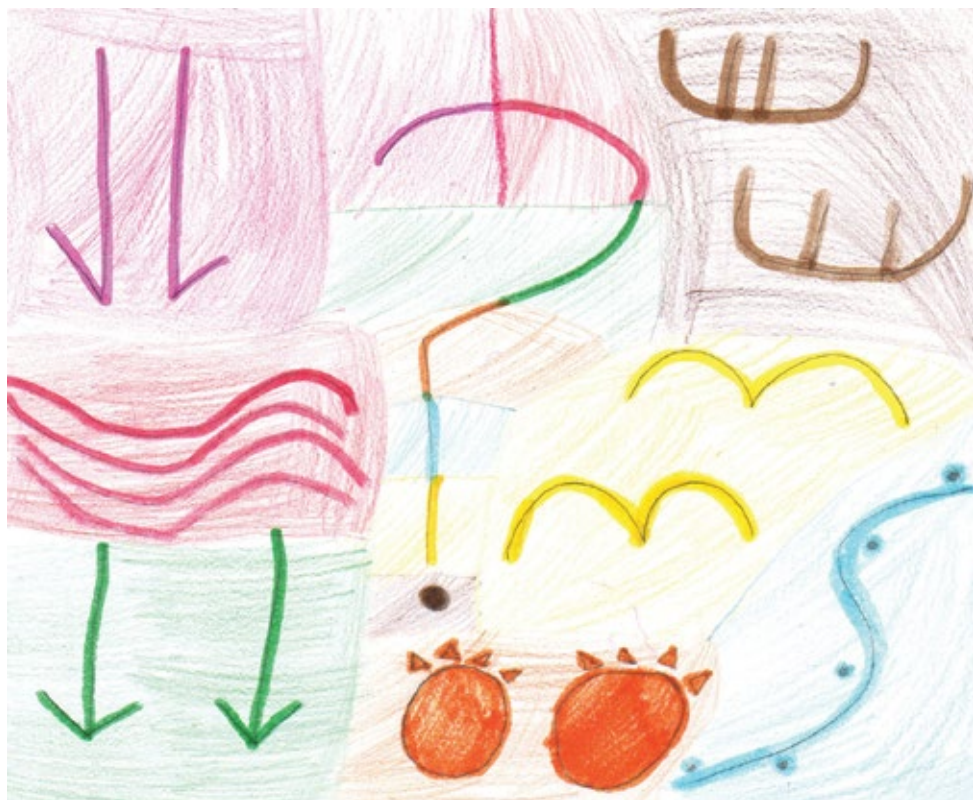
The Enviro-Stories Education Program is a PeekKdesigns initiative.

Graphic design by PeekKdesigns, www.peekkdesigns.com.au

Printed by Greenridge Press, www.greenridgepress.com.au

Copyright © 2014 Central Tablelands Local Land Services, www.lis.nsw.gov.au/centraltablelands

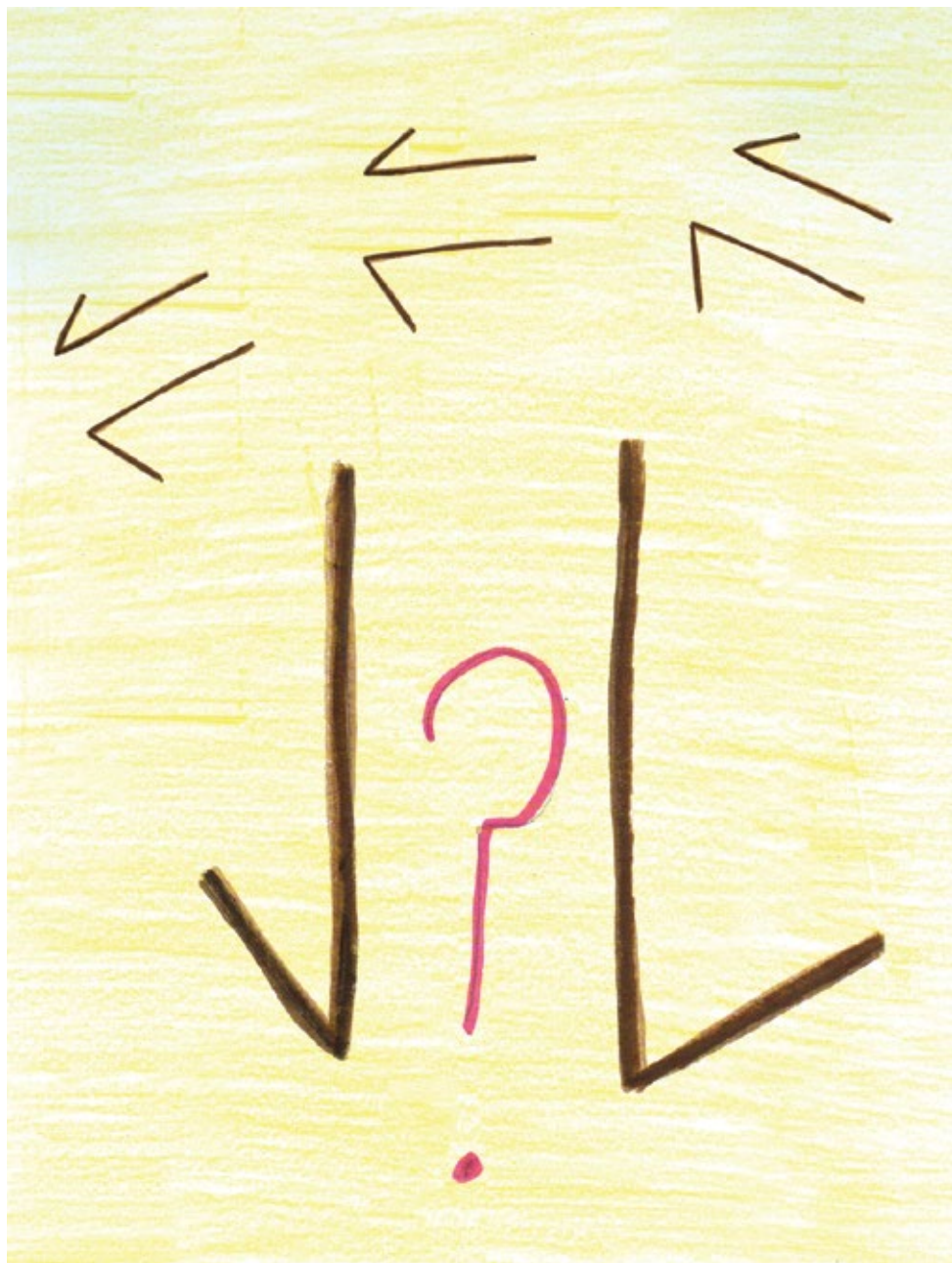
Citation: Scadding, G. 2014. *Aboriginal Animal Tracks*. Central Tablelands Local Land Services, NSW.



Throughout Australia, Aboriginal people use icons or symbols to tell their stories. These icons and symbols are used in paintings, rock engravings and carvings to show the people, animals, plants and general features of their traditional lands.

Animal signs and symbols usually represent the tracks that the animals make. See if you can guess what animals some of these symbols are showing.

What animal symbol do you think this is?



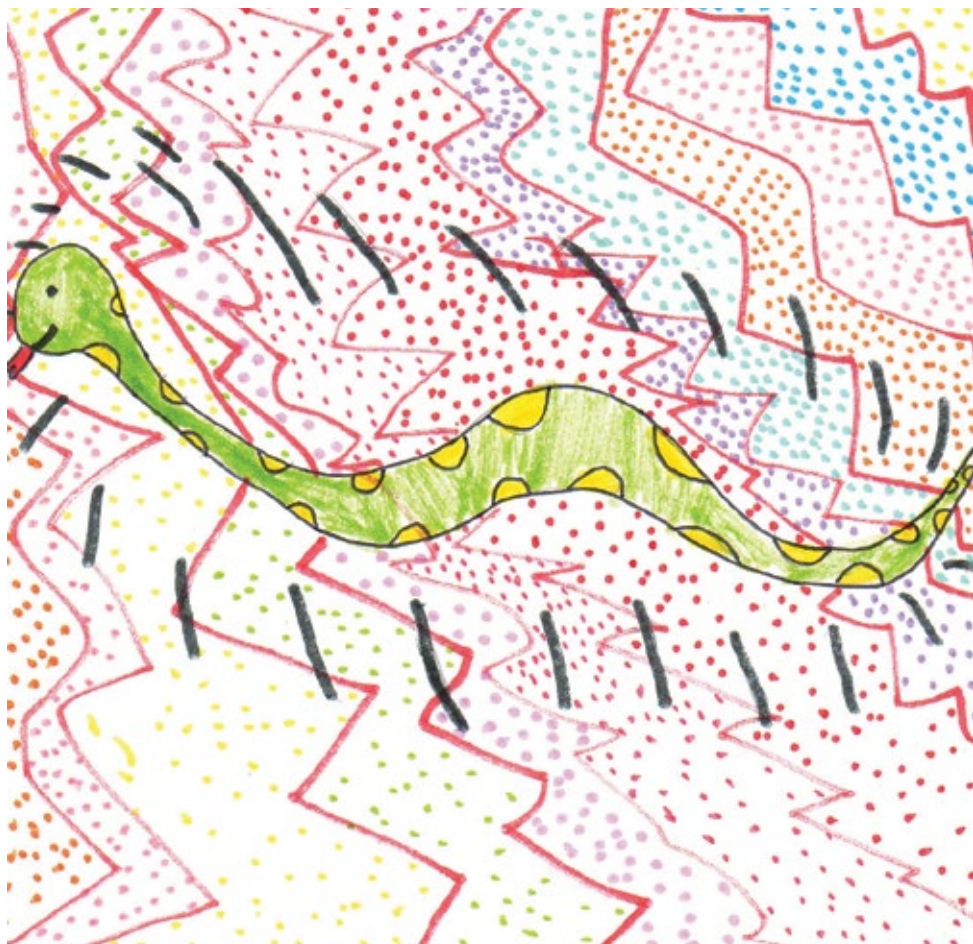


It's a kangaroo!

- Kangaroos have long tails so they can keep balance.
- Kangaroos have a pouch and belong to the marsupial family.
- Kangaroos are herbivores (plant eaters).

Whose track could this be?

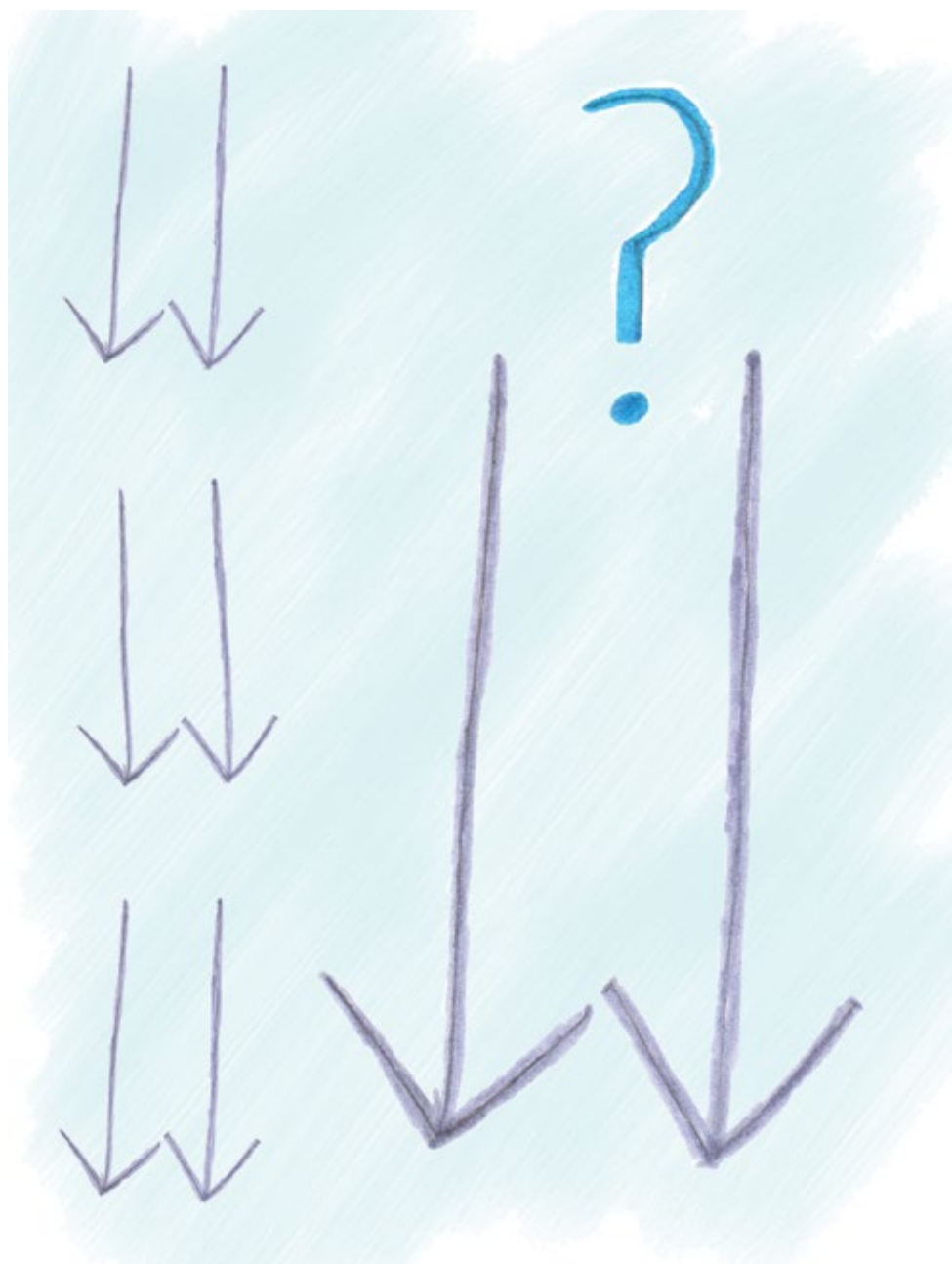


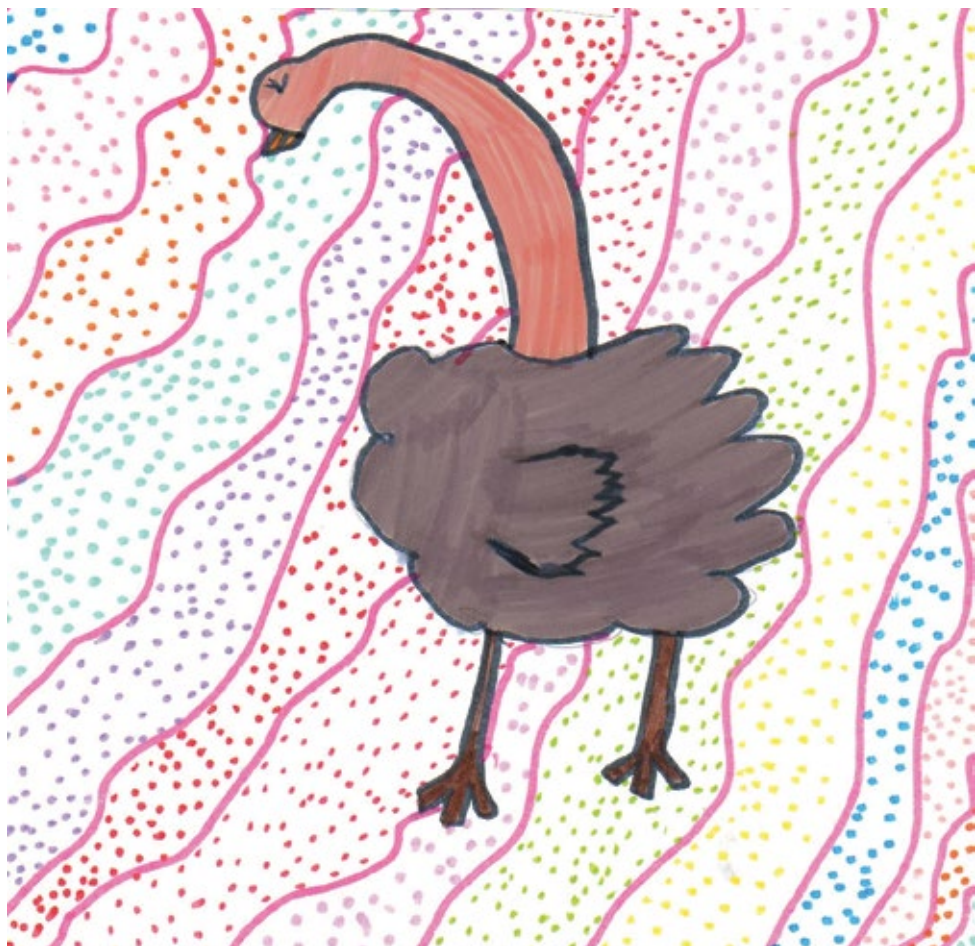


It's a snake!

- Snakes are cold-blooded and are a type of reptile.
- Snake skin is smooth and dry.
- Snakes are carnivores (meat eaters).
- Snakes do not have eyelids.

I wonder what animal this is?





It's an emu!

- The emu is so heavy it is not able to fly.
- The emu is Australia's largest bird.
- Emus cannot fly but they are fast runners, up to 48 kilometres per hour.
- Emus eat grass, leaves and small insects.

What symbol is that?



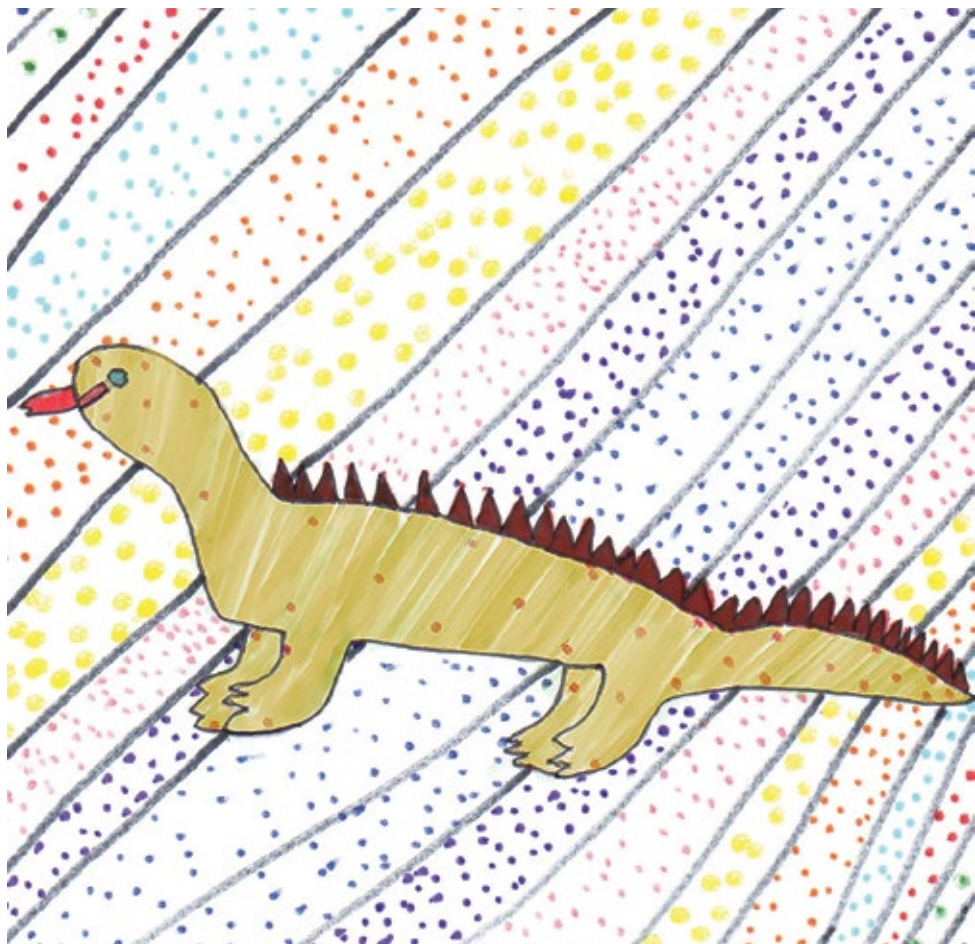


It's a dingo!

- Dingoes are in the dog (canine) family.
- Dingoes are carnivores (meat eaters).
- Dingoes are the largest land-based predator in Australia.
- Dingoes do not bark, but they do howl.

Whose track is that?





It's a lizard!

- Lizards are reptiles (cold blooded).
- Lizards can defend themselves with their teeth, claws and tails.
- Lizards lay eggs.
- The Perentie is the largest monitor lizard in Australia - it is over 2 meters long.

What about this one?

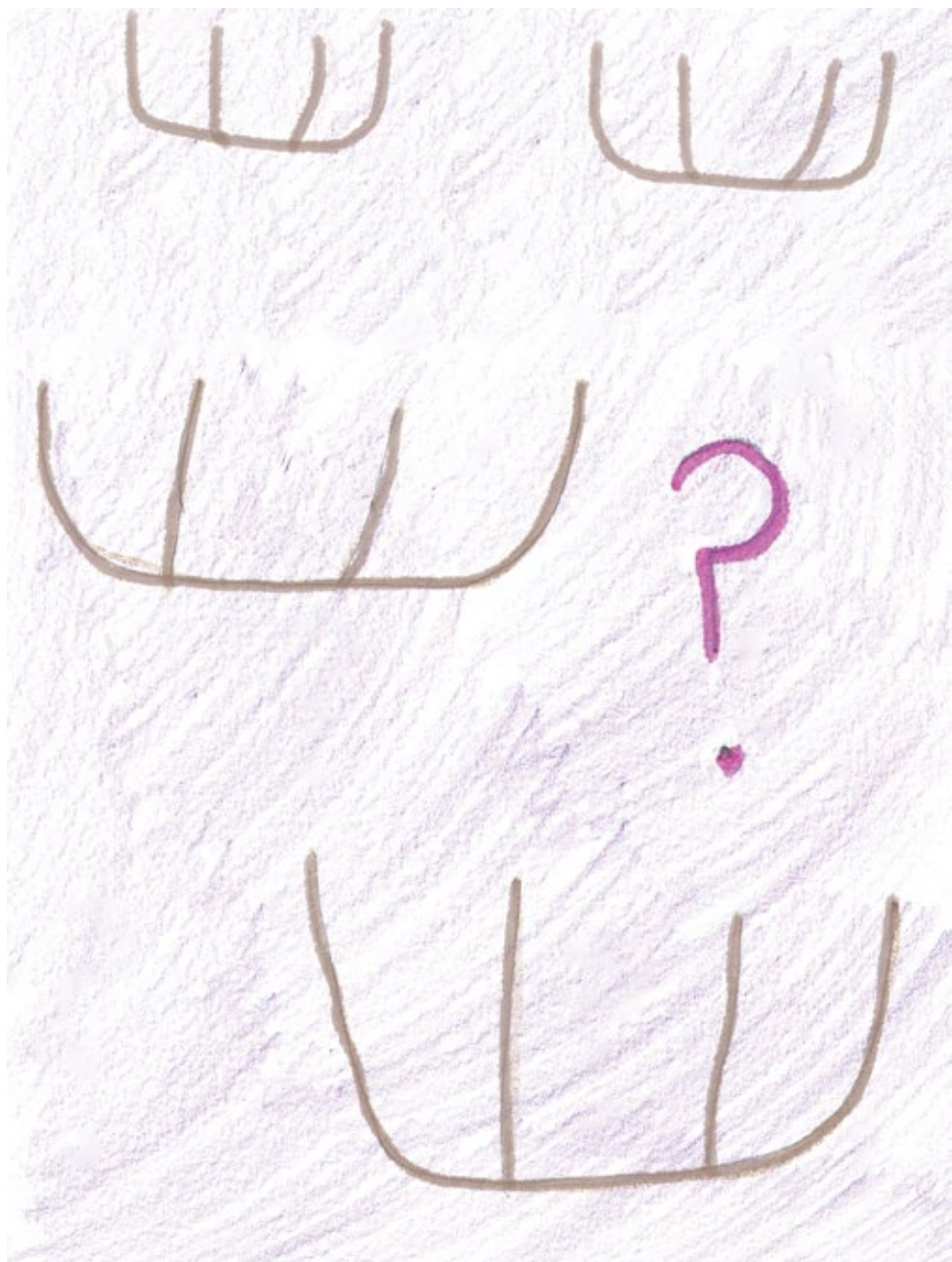




It's a cockatoo!

- Cockatoos are birds that are part of the parrot family.
- Cockatoos make their nests in tree hollows.
- Cockatoos eat mainly seeds, corms, fruit, flowers and sometimes insect larvae.

I wonder...?





It's a possum!

- Possums live in trees.
- Possums are herbivores (plant eaters).
- Possums have a pouch and belong to the marsupial family.
- Possums are nocturnal (they only come out at night).



Grace Scadding
Borenore Public School, Year 3 2014

peeKdesigns 



Local Land
Services
Central Tablelands



Local Land
Services
Central West