

Origin Energy



Karlie Boyton, Grace Heffernan
and Abbey-Lee Noden

Uranquinty Public School



Creative Catchment Kids

Creative Catchment Kids is an initiative of Wirraminna Environmental Education Centre. It aims to improve engagement between our funding partners and school students by providing opportunities for positive and authentic ventures that encourage students to develop creative solutions to agriculture and natural resource management issues.

www.wirraminna.org/creative-catchment-kids/

Wirraminna Environmental Education Centre

The Wirraminna Environmental Education Centre is located in Burrumbuttock, north of Albury in southern NSW. Since 1995, the centre, which is adjacent to Burrumbuttock Public School, has provided opportunities for discovery and learning about the natural environment, the ecology of the local woodlands and the beauty of native plants.

www.wirraminna.org

Enviro-Stories

Enviro-Stories is an innovative literacy education program that inspires learning about natural resource and catchment management issues. Developed by Peekdesigns, this program provides students with an opportunity to publish their own stories that have been written for other kids to support learning about their local area.

www.envirostories.com.au

Origin Energy

Authors: Karlie Boyton, Grace Heffernan
and Abbey-Lee Noden

Teacher: Jessica Fuller

School: Uranquinty Public School

This book has been published as part of the 2015 Creative Catchment Kids program and associated with Enviro-Stories, a Peekdesigns education program. For more information about sustainable energy use, head to the Wirraminna website for your copy of the Energy and Water Saving Education Kit for Schools.

Energy and Water Saving Education Kit

The Energy and Water Saving Education Kit for schools is designed for Stage 2 and 3 students to help them understand how energy use and water used can impact on climate change. The kit contains teacher notes and lessons on sources of energy and energy saving, electricity consumption and saving water.

www.wirraminna.org/sustainability-trailer/



Local Land
Services



© 2015 Wirraminna Environmental Education Centre, www.wirraminna.org
Design by Peekdesigns, www.peekdesigns.com.au

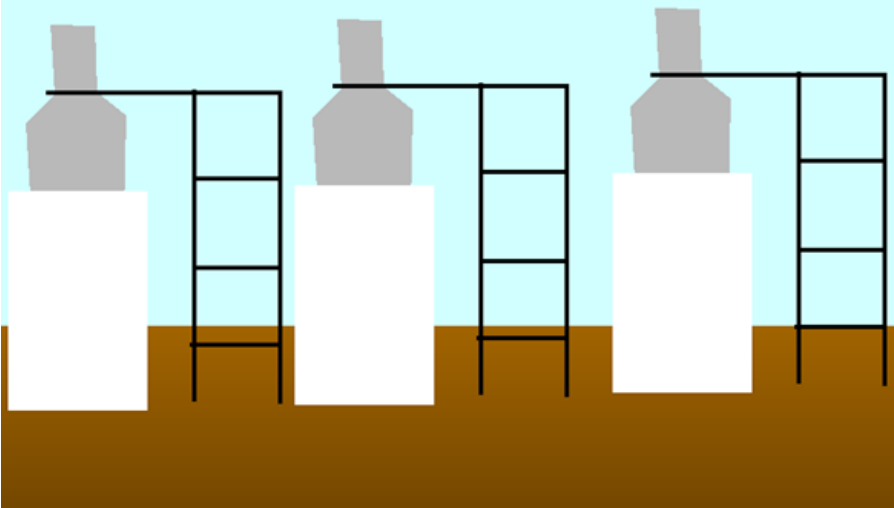
Contents

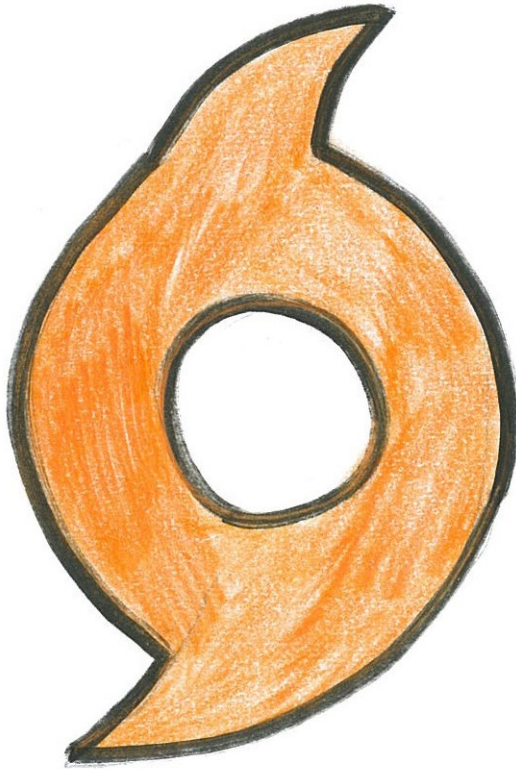
What is energy?.....	3
Origin Energy	4
Renewable Energy	5
Solar Energy	6
Wind Energy	7
Hydro Power	8
Bio Energy	9
The Uranquinty Power Station.....	10
Origin Energy and Uranquinty Public School	11

What is energy and where does it come from?

Energy can travel in many forms such as; heat, light, chemical and electrical. Energy makes most things work such as fridges, televisions, freezers, heaters, toasters and lights.

Energy comes from all different sources such as: oil, coal, wind, the sun and water.





Origin Energy

Origin Energy is the leading provider of energy across Australia, New Zealand and the Pacific. In today's society the demand for energy is greater than ever before.

Origin is committed to establishing energy created through natural gas and renewable energy sources.



Renewable Energy

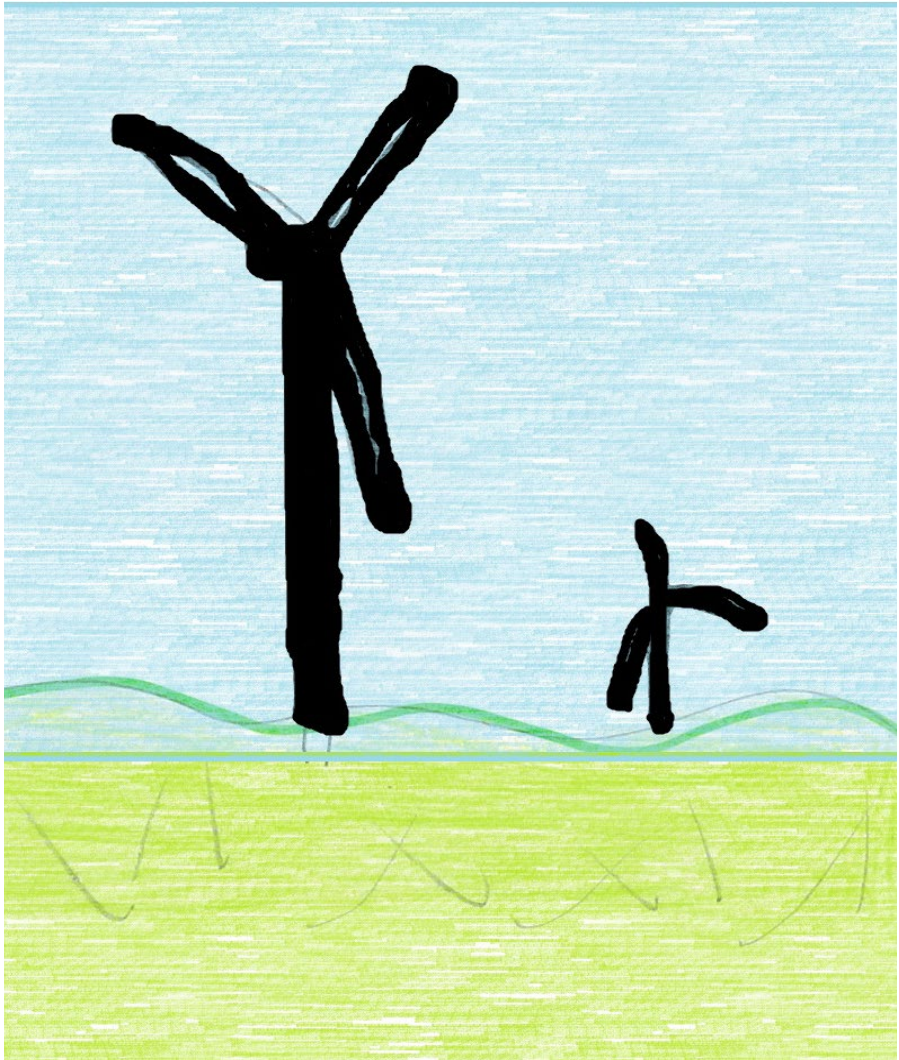
Renewable energy is electricity that's powered by natural sources such as wind, water and the sun.

Renewable energy is a better option for the environment. Some renewable energy sources that are currently used in Australia include: solar energy, wind energy, hydro power and bio energy.



Solar Energy

Solar energy is energy from the sun. It occurs naturally in plants through the process of photosynthesis. People use technology to convert sunlight directly to electricity and heat.

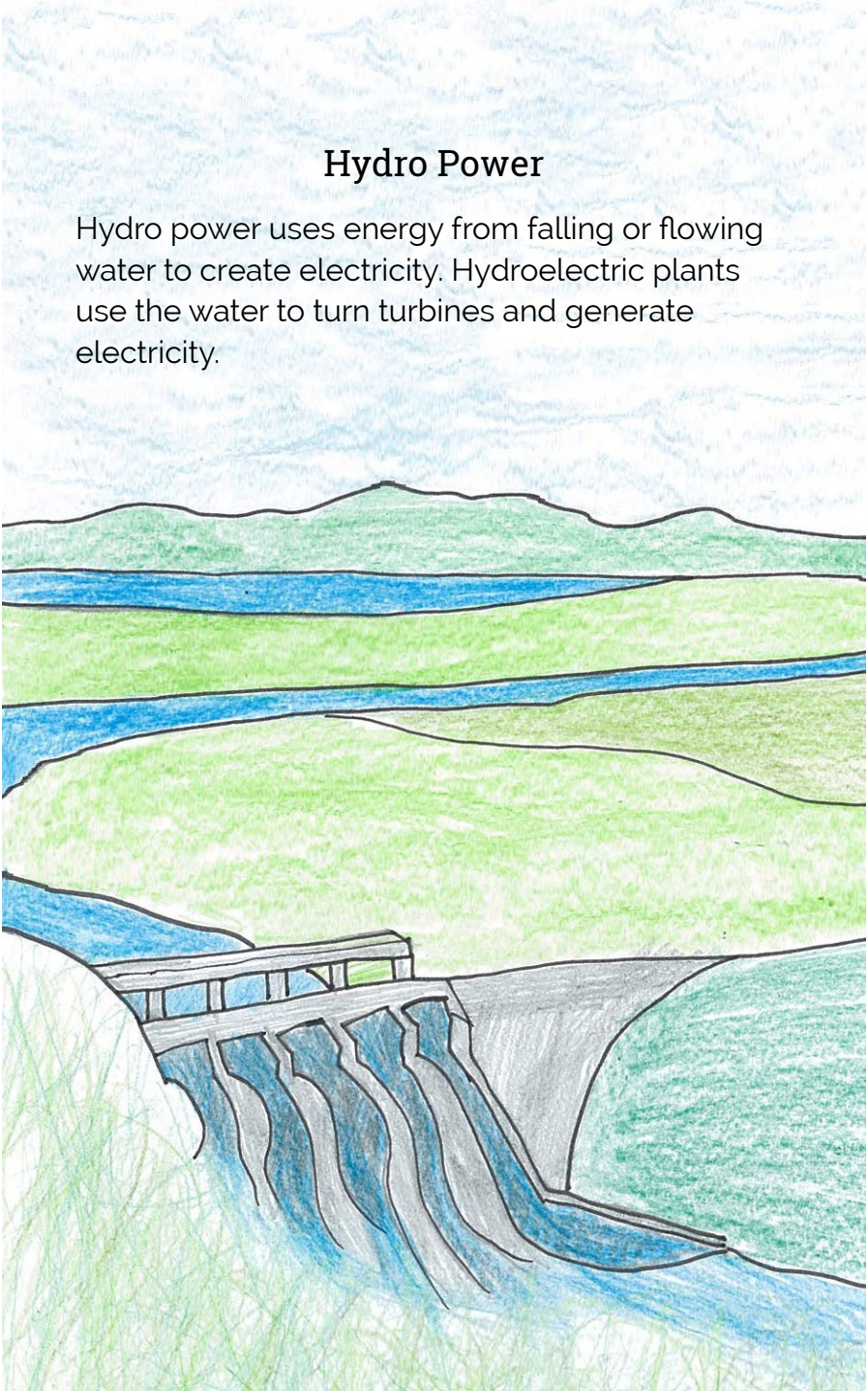


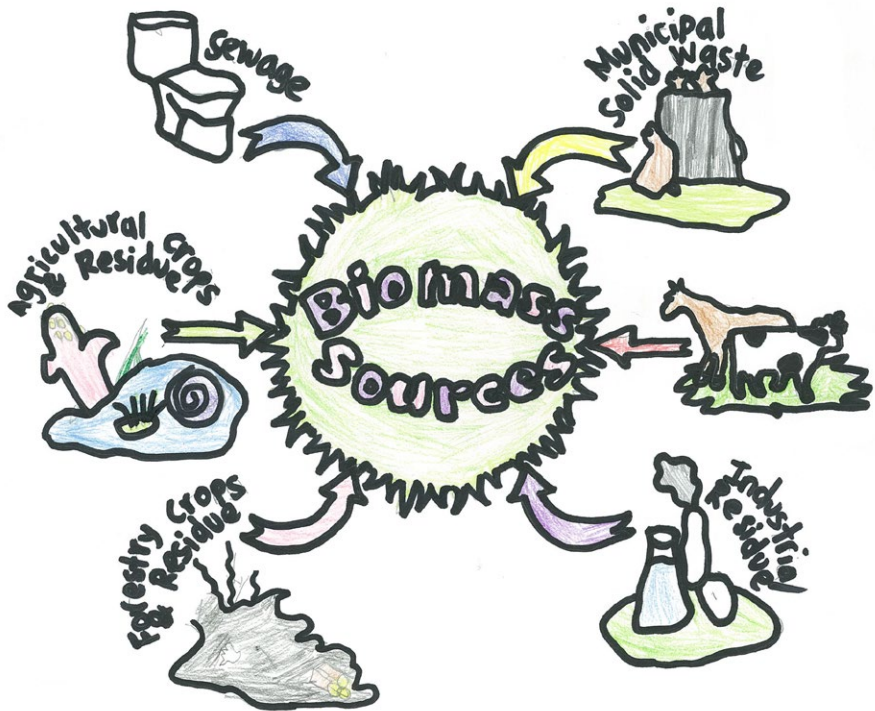
Wind Energy

Wind energy uses energy from air flowing over the earth's surface. The energy of the wind turns the blades of massive turbines to generate electricity.

Hydro Power

Hydro power uses energy from falling or flowing water to create electricity. Hydroelectric plants use the water to turn turbines and generate electricity.





Bio Energy

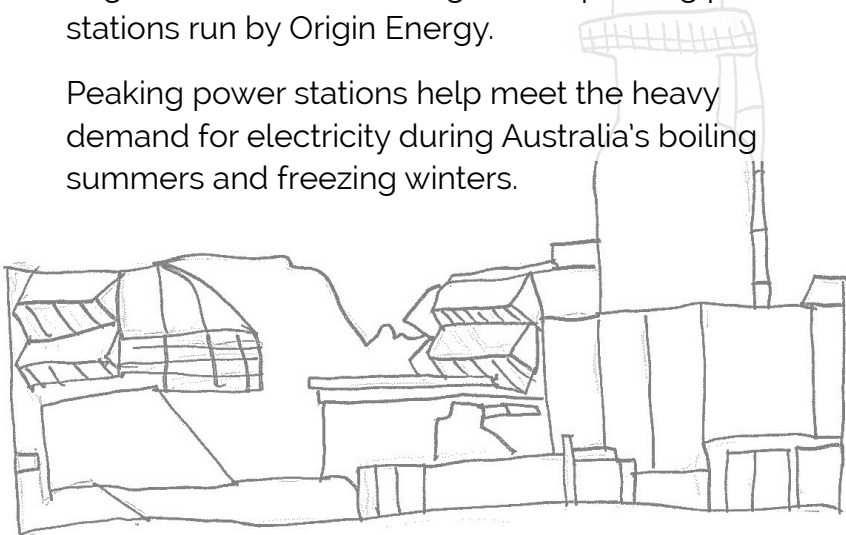
Bio energy uses gases from decaying plants or animal matter to power turbines to generate electricity. Common types of biomass include: wood waste, manure, landfill waster and crop by-products such as sugarcane.



The Uranquinty Power Station

The Uranquinty Power Station is one of the largest and most efficient gas fired peaking power stations run by Origin Energy.

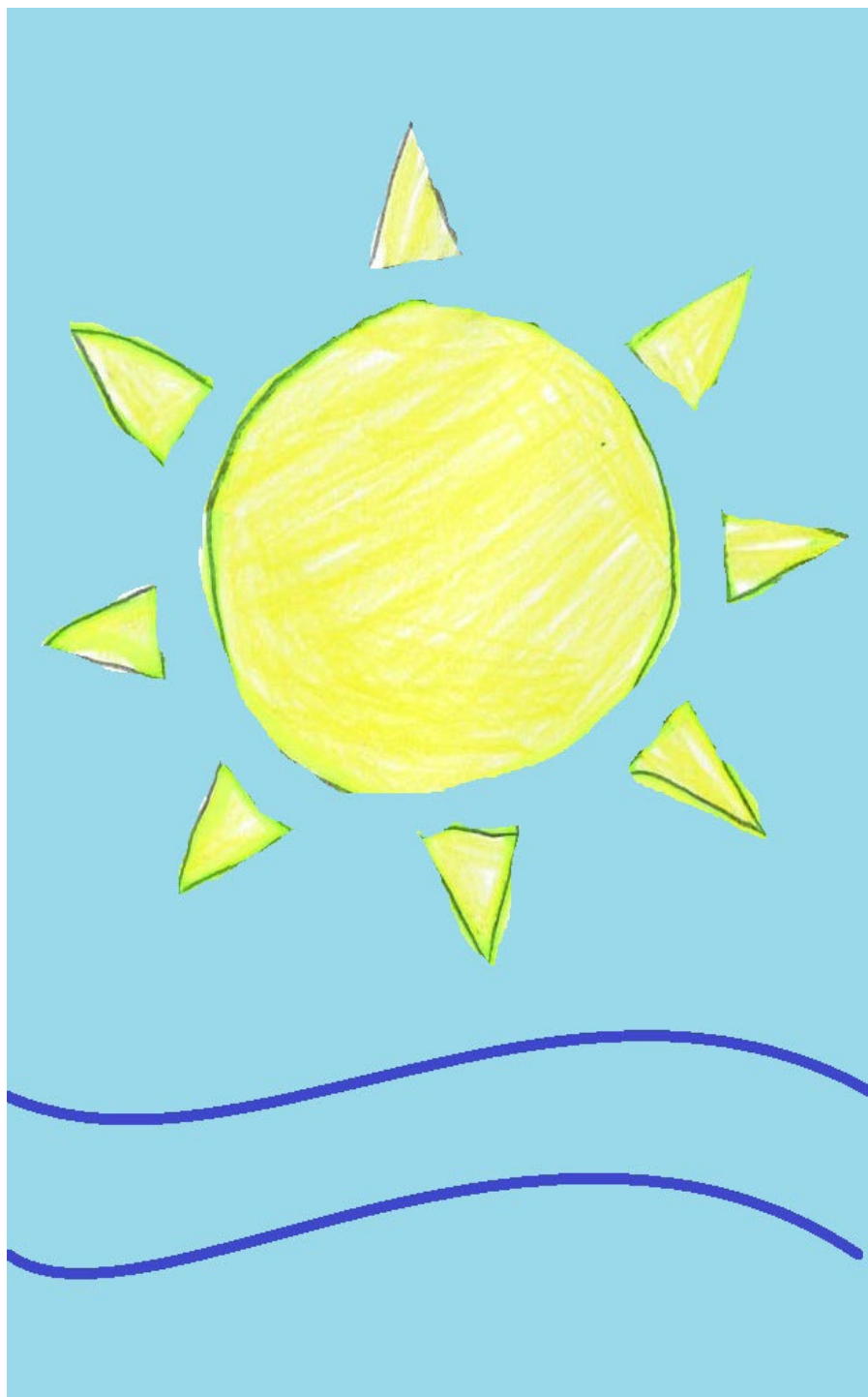
Peaking power stations help meet the heavy demand for electricity during Australia's boiling summers and freezing winters.



Origin Energy and Uranquinty Public School

The Origin Energy Uranquinty Power Station works in partnership with the local school. They donate money to the school, which allows them to purchase new books for the library, science kits and contribute to school excursions. Students are able to learn about electricity, energy and taking care of the environment for the future.







Karlie Boyton, Grace Heffernan and Abbey-Lee Noden

2015 Year 4 and 5, Uranquinty Public School

CONGRATULATIONS

Wirraminna Environmental Education Centre and the Creative Catchment Kids Program won the 2015 NSW Junior Landcare Team Award and will be competing in the 2016 National Landcare Awards.



Local Land
Services

