

Our Local Knight

Securing Our Region



John Coughlan, Jarvis Keogh, Amy Salter
and Maddy Telford

Barham Primary School



Creative Catchment Kids

Creative Catchment Kids is an initiative of Wirraminna Environmental Education Centre. It aims to improve engagement between our funding partners and school students by providing opportunities for positive and authentic ventures that encourage students to develop creative solutions to agriculture and natural resource management issues.

www.wirraminna.org/creative-catchment-kids/

Wirraminna Environmental Education Centre

The Wirraminna Environmental Education Centre is located in Burrumbuttock, north of Albury in southern NSW. Since 1995, the centre, which is adjacent to Burrumbuttock Public School, has provided opportunities for discovery and learning about the natural environment, the ecology of the local woodlands and the beauty of native plants.

www.wirraminna.org

Enviro-Stories

Enviro-Stories is an innovative literacy education program that inspires learning about natural resource and catchment management issues. Developed by Peekdesigns, this program provides students with an opportunity to publish their own stories that have been written for other kids to support learning about their local area.

www.envirostories.com.au

Our Local Knight: Securing Our Region

Authors: John Coughlan, Jarvis Keogh, Amy Salter and Maddy Telford

Teacher: Sue Radywonik

School: Barham Primary School

Local Land Heroes - Securing Our Region

In 2015, students involved in the Creative Catchment Kids program researched and wrote stories about their 'Local Land Heroes' who are involved in pest management in the Murray and Murrumbidgee regions. These heroes are local individuals, couples, a business or industries that have made a difference in their local community by contributing to the management of pest animals and plants. The program was generously funded by Murray Local Land Services and Riverina Local Land Services.

Local Land Heroes is part of Enviro-Stories, a PeekDesigns education program.



Local Land Services



Australian Government



© 2015 Wirraminna Environmental Education Centre, www.wirraminna.org
Design by PeekDesigns, www.peekdesigns.com.au



Roger Knight is a passionate supporter of the environment. In his present role of Community Support Officer for the Western Murray Land Improvement Group Inc., he works with farmers, local shires and other organisations. Roger organises and facilitates information sessions to promote natural resource management and sustainable farming.



Roger's love of nature began as a child growing up on a citrus farm in the Barham area. As well as days spent in the orchard, he enjoyed camping holidays in the bush and fishing with his family. So began his love of the great outdoors.



Roger enjoyed many happy times throughout his school years in Barham. He spent his spare moments fishing and camping in the bush.

After completing school, Roger gained an Associate Diploma of Applied Science at the University of New England, Lismore, in Northern New South Wales.





After completing his qualification, Roger moved to Sydney for his first job. Here, as part of his role as a technical officer for the Sydney Water Board, he took samples of water from around the Sydney region's water storage dams to test for water quality. This also involved maintaining a Fish Monitor Intake Facility (a bit like using canaries in a coal mine), to alert authorities to any concerns with quality levels. This position allowed him to do what he loves most, being outdoors.



By Mattinbgn (Own work) [CC BY-SA 3.0 (<http://creativecommons.org/licenses/by-sa/3.0/>)]
via Wikimedia Commons

Wishing to return to his local region, Roger began a new position at Kraft Foods Limited / Murray Goulburn Cooperative in Leitchville. Roger's role in the factory was to undertake quality control. He conducted testing and worked on quality systems to improve the product and food safety standards. He was also an environmental manager, who looked after the farm and waste water treatment plant and improved other environmental aspects of the cheese factory.



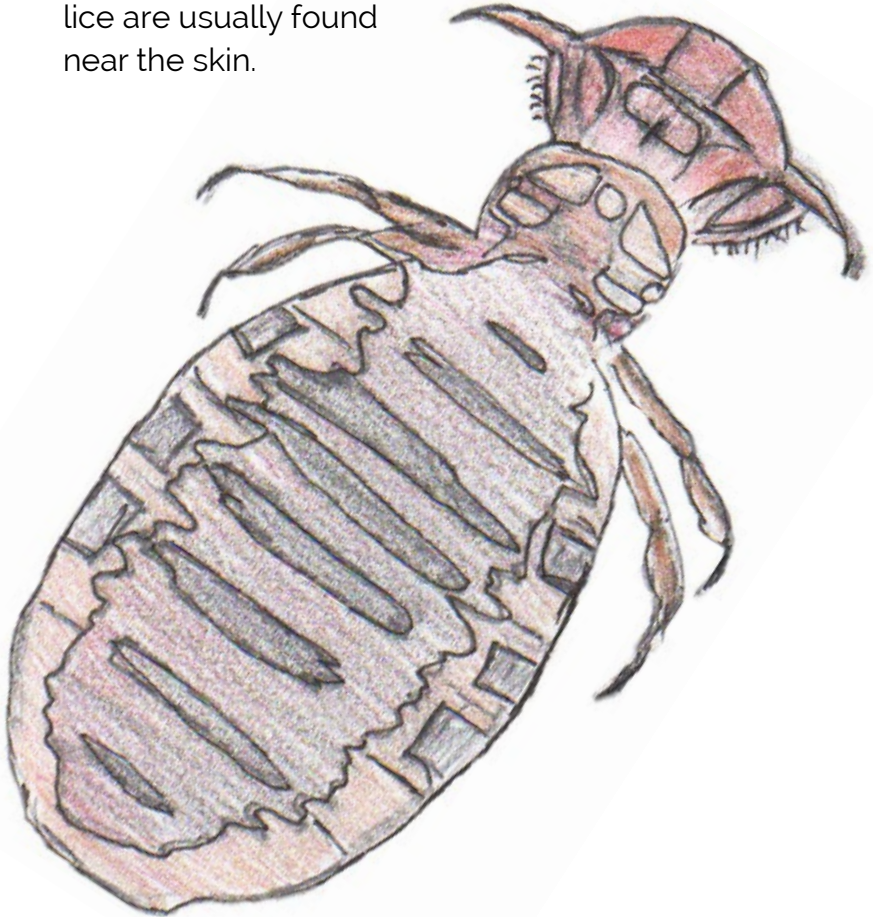
Roger then took up his present position in Barham which involves him facilitating meetings and events. In this role, he organises experts, with knowledge in a specialised areas, to present up to date information, on best farming practices. These include control of foxes, bird identification, obtaining grants to assist land holders to establish native plantations, as well as new farming methods, such as electronic ear tagging options for sheep graziers.

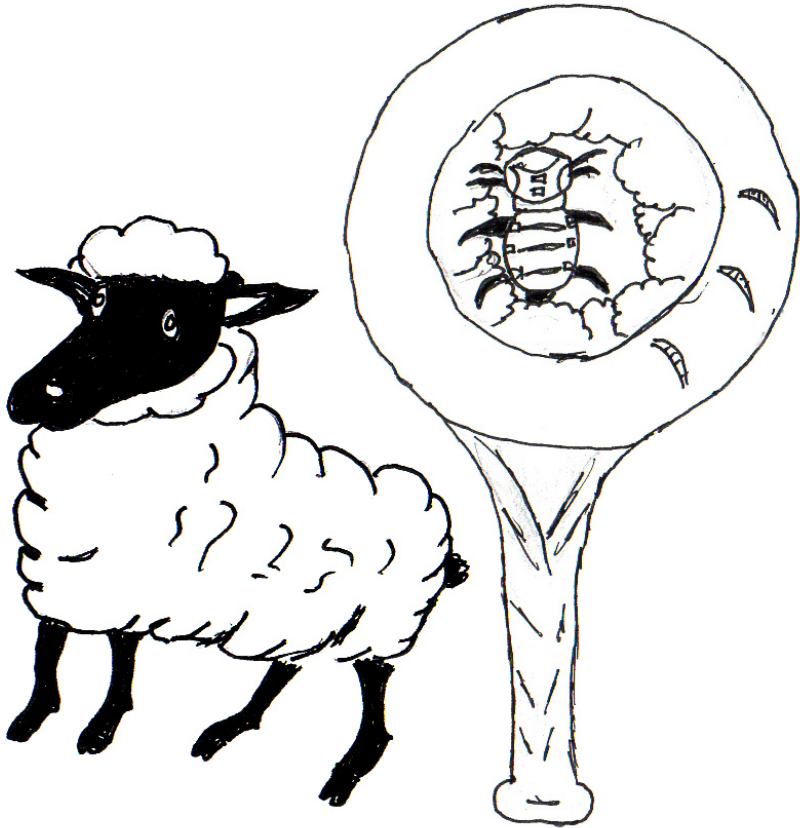




As well as this, Roger assists farmers with lice control, which helps to promote healthy sheep. Sheep lice cost New South Wales sheep producers about \$123 million per year in treatment costs and lost production. If sheep are not treated, they become very ill which results in loss of wool and, in many cases, death.

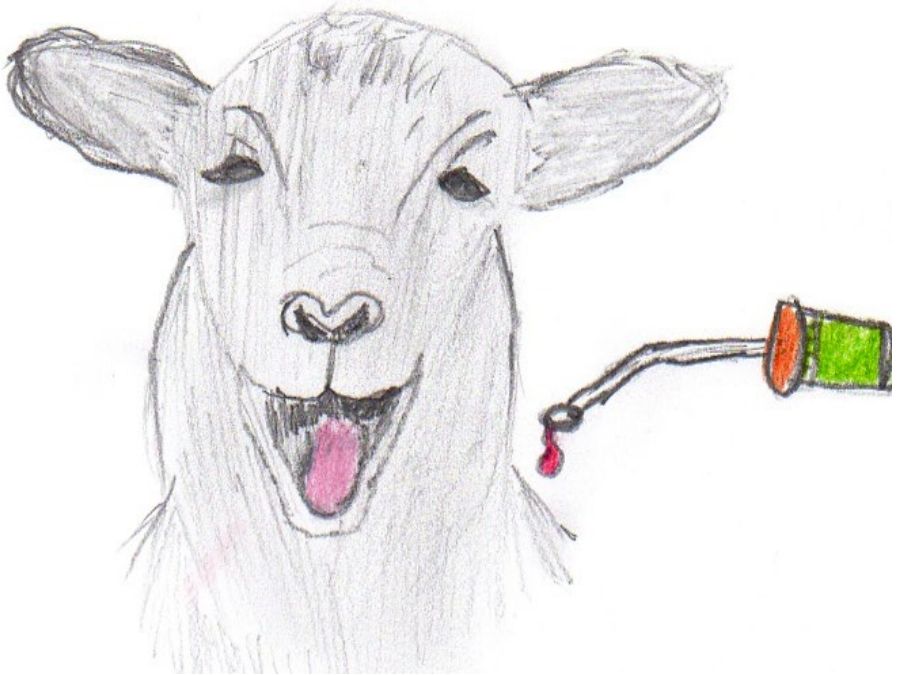
Adult sheep body lice are about 1.8 mm long and about 0.6 mm wide. They have a broad reddish head and a pale brown abdomen with slightly darker brown stripes. Most lice are usually found near the skin.





Sheep lice, like human head lice, make sheep itchy. Affected sheep often rub against fences, trees and logs to relieve the itching. This damages the wool. Sheep affected by lice can also develop a fever, which can also result in wool loss.

Farmers regularly administer a dose of drench to each sheep to prevent lice. Insecticides play a big role in the control of sheep lice, but good management is also required to eliminate lice from a flock. Each sheep needs to be treated to ensure the whole flock remains lice free.





Enjoying life in the country as a child sowed the seed to entice Roger to return to his local region, where he now helps to promote the environmental and agricultural needs of the area. Roger is our Local Land Hero, who is helping to secure our region for the future.



Roger Knight, Amy Salter, Maddy Telford,
Jarvis Keogh and John Coughlan

2015 Year 6, Barham Primary School

CONGRATULATIONS

Wirraminna Environmental Education Centre and
the Creative Catchment Kids Program won the
2015 NSW Junior Landcare Team Award and will be
competing in the 2016 National Landcare Awards.



Local Land
Services

